

AgroLedger

Changing how we manage traceability



WE NEEDED TO RETHINK TRACEABILITY

We are responsible to our industry for the program's success, accountable to our industry, regulators and CCIA for all things CSIP and traceability.





WE NEEDED TO RETHINK TRACEABILITY

Our industry wants traceability but there is an expectation that when we have it we will be able to do all sorts of amazing things with the information collected.



WE NEEDED TO RETHINK TRACEABILITY

From a strictly regulatory perspective, traceability is like a black hole into which we throw data and money, neither to be seen again.



WE NEEDED TO RETHINK TRACEABILITY

We should not be sacrificing potential for the sake of old infrastructure. We need systems that can rapidly adapt to new and emerging technologies. Traceability can make sense if we can get innovative.

WE NEEDED TO RETHINK TRACEABILITY

We need systems that can support rapid disease response, that create value for its users, that are easy to use and are cost effective to maintain.



WE SET OUT TO EXPLORE BLOCKCHAIN

We looked for a reliable, innovative, real-time blockchain application in livestock and met with developers in December 2018.





WE SET OUT TO EXPLORE BLOCKCHAIN

We trialed the technology to be sure it integrates with existing infrastructure.



SheepChain Home Data Login

Unique Id	163a39bf-4a6e-4bc7-9b48-281b6cb83189	Id: 86651a31-7b0a-4870-a2db-cb90a4efa89a
RFID	501041124	Action: Create
Custodian	Brookwater Farms	Txid: 0xca2d013dc8ba2aad271ed74a98a...
Location	Northumberland	
Arrival at Processor	1/29/2019 1:00:49 PM	

Products

Id: c1a01c64-2d42-468c-a564-dfe7097bc6c2	Details
Product Type: Carcass	

Events

Id: 6f314609-70e9-405e-847c-14e735e3380c	Details
Description: born	
DateTime: 05/05/2018 00:00:00	

Batch Events

Id: 4ea9f07e-cd70-44cb-adca-8918e07bf4f8	
Description: Moved to main cooler	
Location: Northumberland	
DateTime: 01/31/2019 05:30:00	

Id: 61b48bf0-d651-4890-b14c-db73a5a9df20	
Description: Processing for packaging	
Location: Northumberland	
DateTime: 01/31/2019 07:30:00	

Id: c1e2eefe-06ef-4d21-9b10-2d459aa729be	
Description: Finished packaging	
Location: Northumberland	
DateTime: 01/31/2019 09:30:00	



WE SET OUT TO EXPLORE BLOCKCHAIN

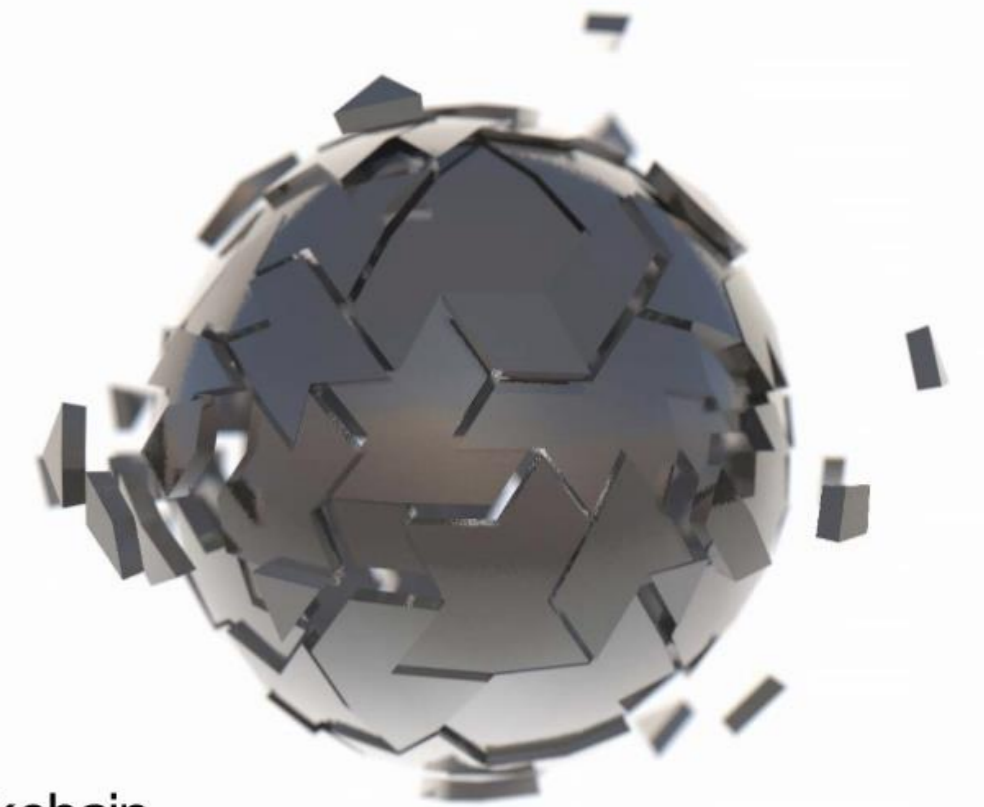
We partnered with the Community of Federal Regulators and Canadian Food Inspection Agency in a use case study of blockchain technology in a regulated space.

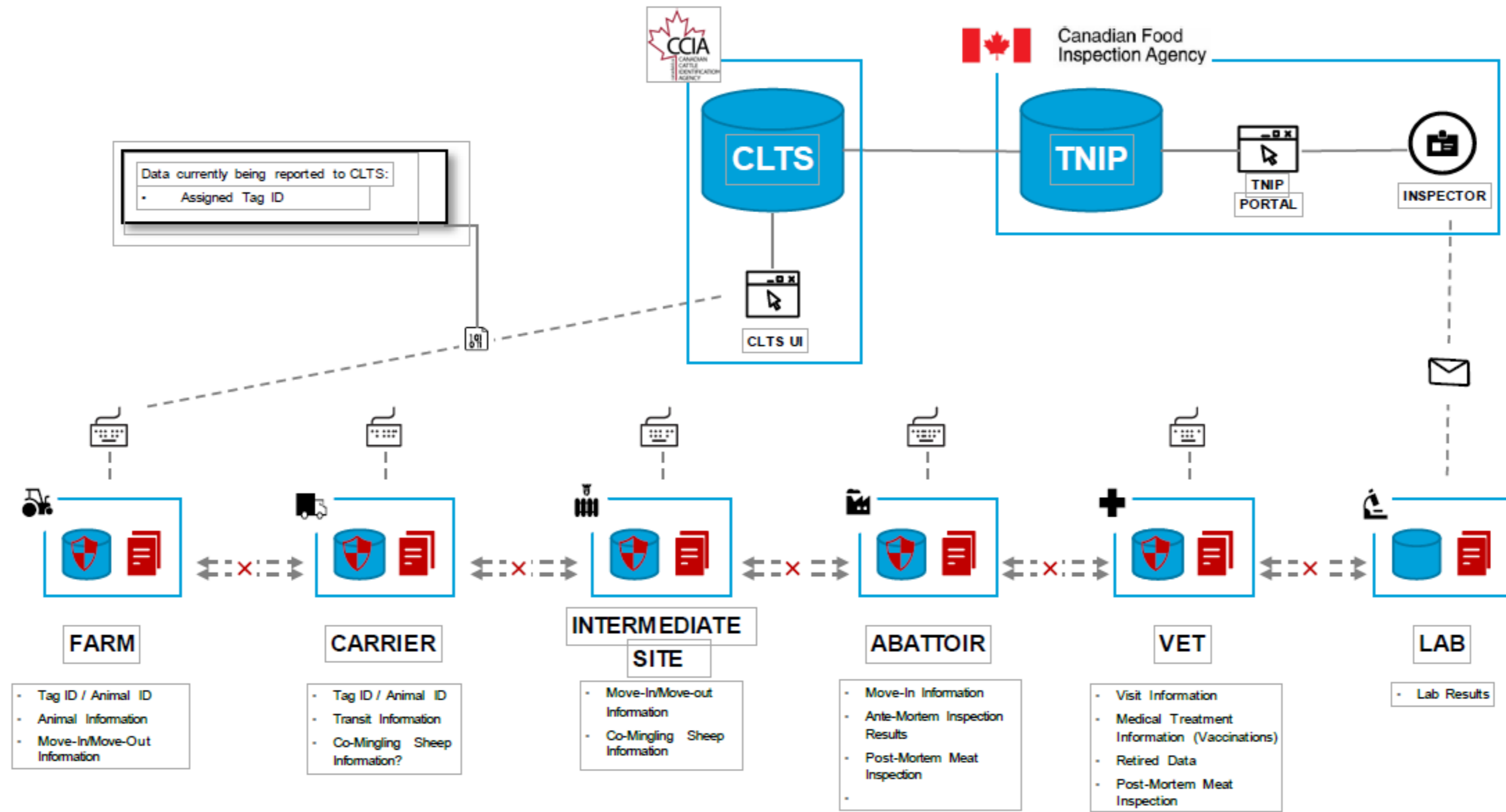
Deloitte.
Digital

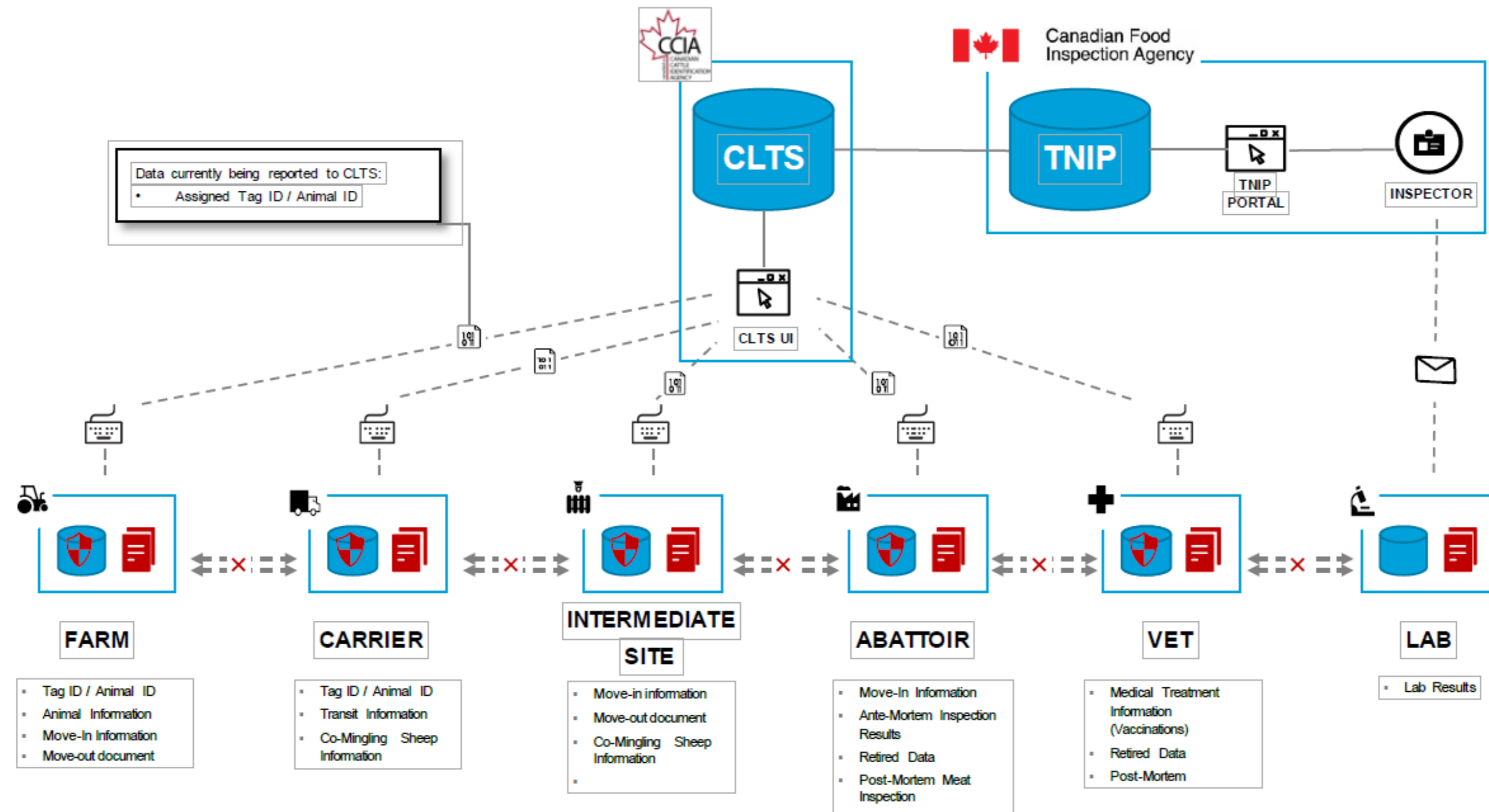
APRIL, 2019

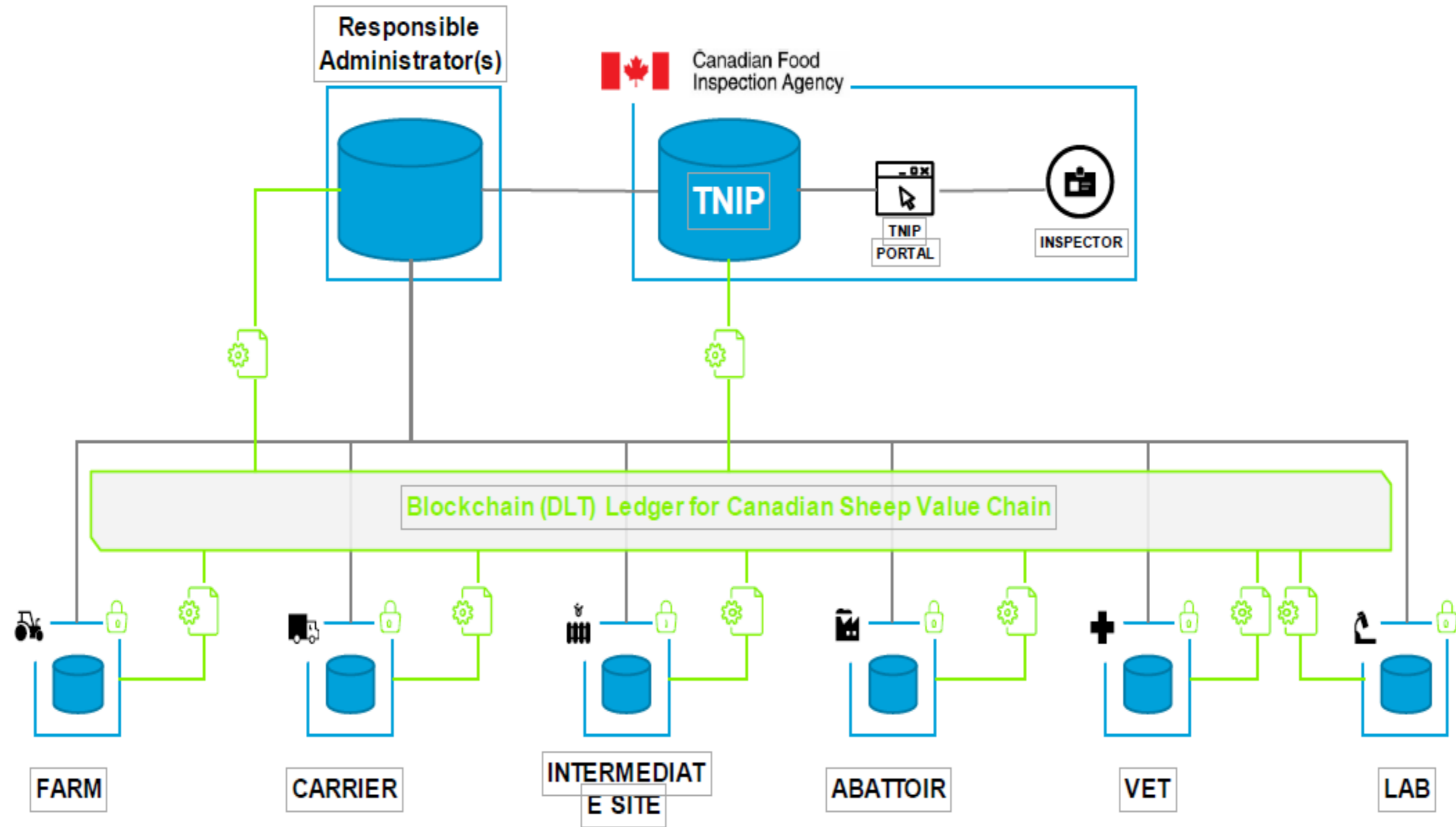
Sheep Traceability Experiment
Tracing Diseased Sheep with Blockchain

Community of Federal Regulators | Canadian Food Inspection Agency









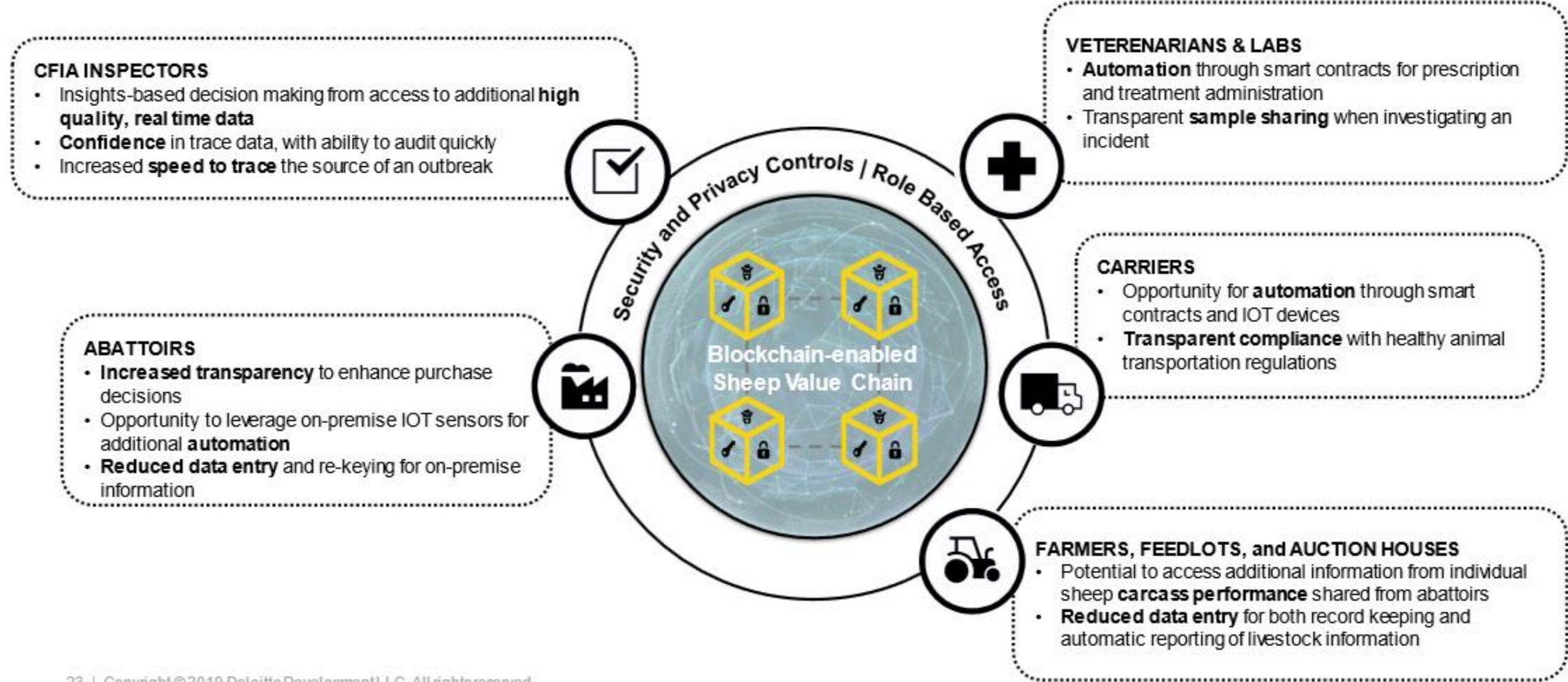


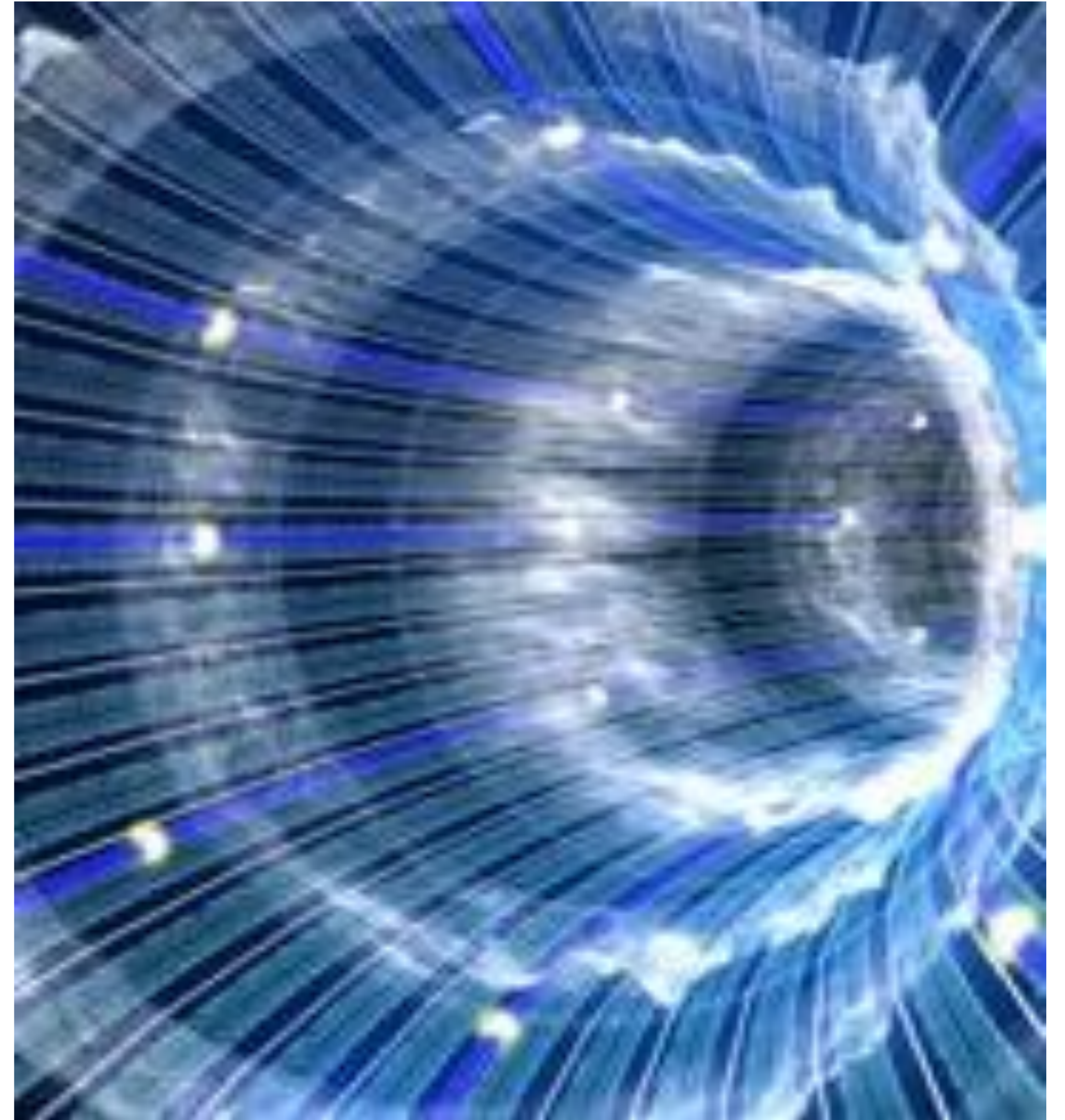
INNOVATE

- Frame
- Discover
- Innovate
- Prototype
- Plan

Broader Stakeholder Value Proposition

A blockchain-enabled value chain would add value to players across the industry







WHAT WE'RE DOING DIFFERENTLY

We built the first blockchain application in Canada that traces livestock from farm to fork. Blockchain is a ledger of decentralized data that is securely shared. Blockchain technology enables a collective group of select participants to share data. With blockchain, transactional data from multiple sources can be collected and shared. (Oracle)

How Blockchain Technology Works



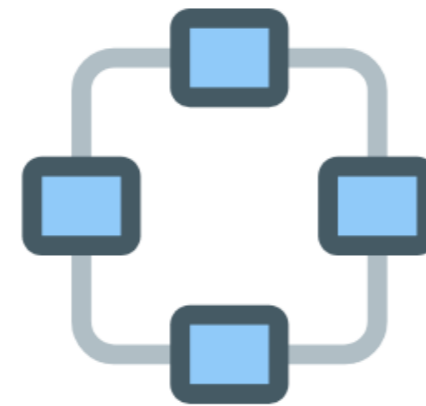
1

A transaction is requested



2

The transaction is broadcasted to a peer-to-peer (P2P) network that consists of computers (otherwise known as nodes)



3

The network of nodes uses known algorithms to validate the transaction and user's status



4



A verified transaction can involve cryptocurrency, contracts, records or other information



5



The transaction is combined with other transactions, once verified, to create a new block of data for the ledger



6



The new block is added to the existing blockchain (which is permanent and unalterable)



7



The transaction is now finished



WHAT WE'RE DOING DIFFERENTLY

Blockchain is...

- ✓ Decentralized
- ✓ Immutable
- ✓ Transparent
- ✓ Permissioned



WHAT WE'RE DOING DIFFERENTLY

But its not just about blockchain.

AgroLedger is based on the latest standards in connectivity and has a RESTful API at its heart, allowing other applications to interact with and extend its functionality.



WHAT WE'RE DOING DIFFERENTLY

Existing systems are easily integrated and AgroLedger can push its information to downstream software and services, connecting existing agricultural management solutions and regulatory databases.

On-boarding additional partners is relatively simple; no large system integration is required. The system is built for the future.



WHAT WE'RE DOING DIFFERENTLY

It uses the latest computing technology and web services to deliver at-a-touch traceability information, capable of digitizing and managing large chunks of information quickly.



WHAT WE'RE DOING DIFFERENTLY

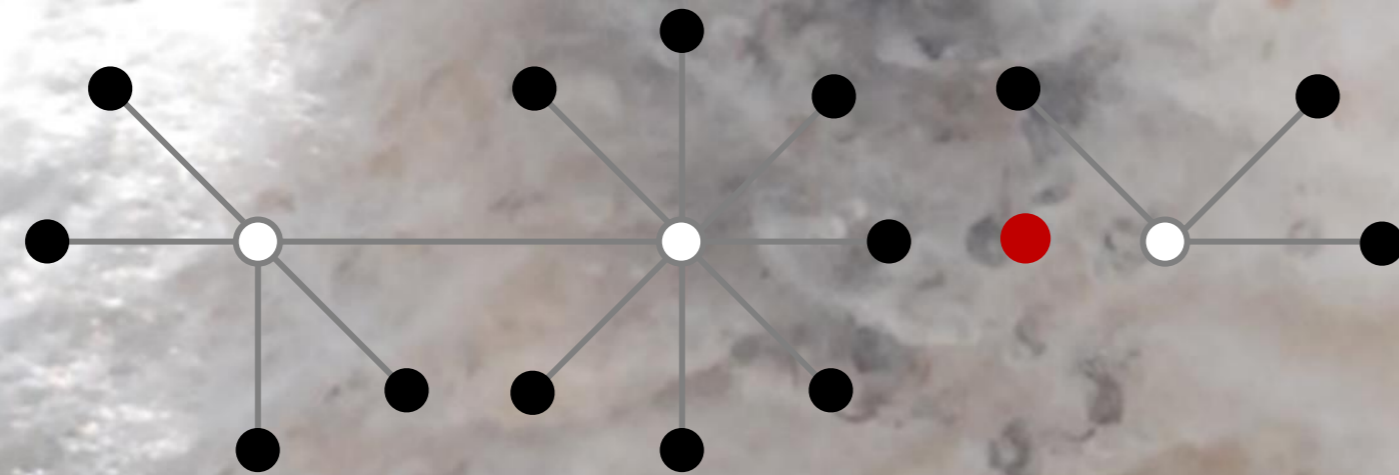
- ✓ Provides full end-to-end, farm-to-fork traceability.
- ✓ Connects producers with consumers at the product level.
- ✓ Delivers critical disease information in real-time.
- ✓ Given its design, it provides de facto management capabilities allowing stakeholders to have key information about their operation at their fingertips.



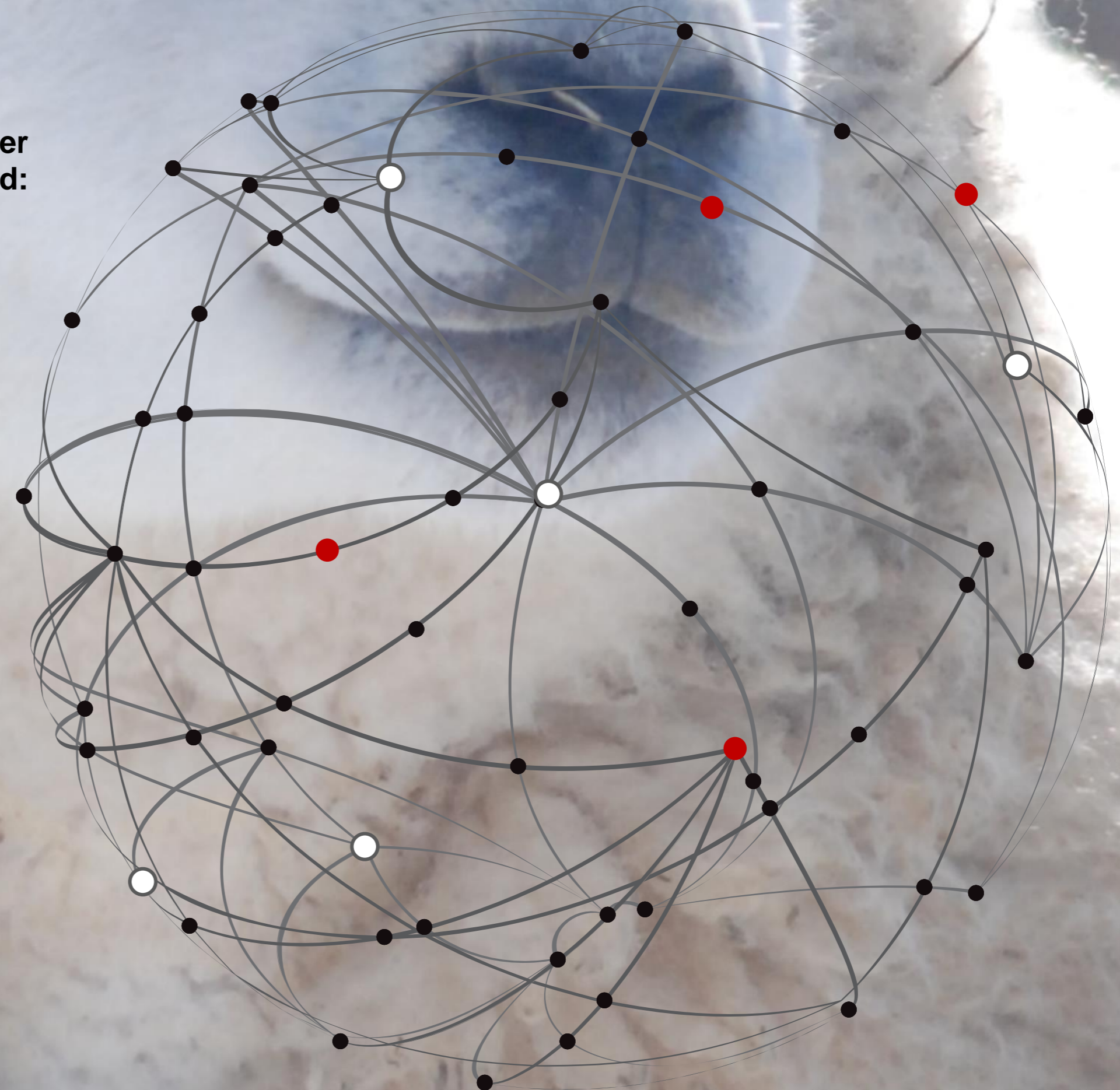
AgroLedger technology give us a system that is blazingly fast, tamper-evident and highly permissioned. This solution will accomplish what few others have managed to conquer to date, connecting the value chain from farm to fork on a product by product basis.

Farm to Fork Connections

Traditional Method:



AgroLedger Method:

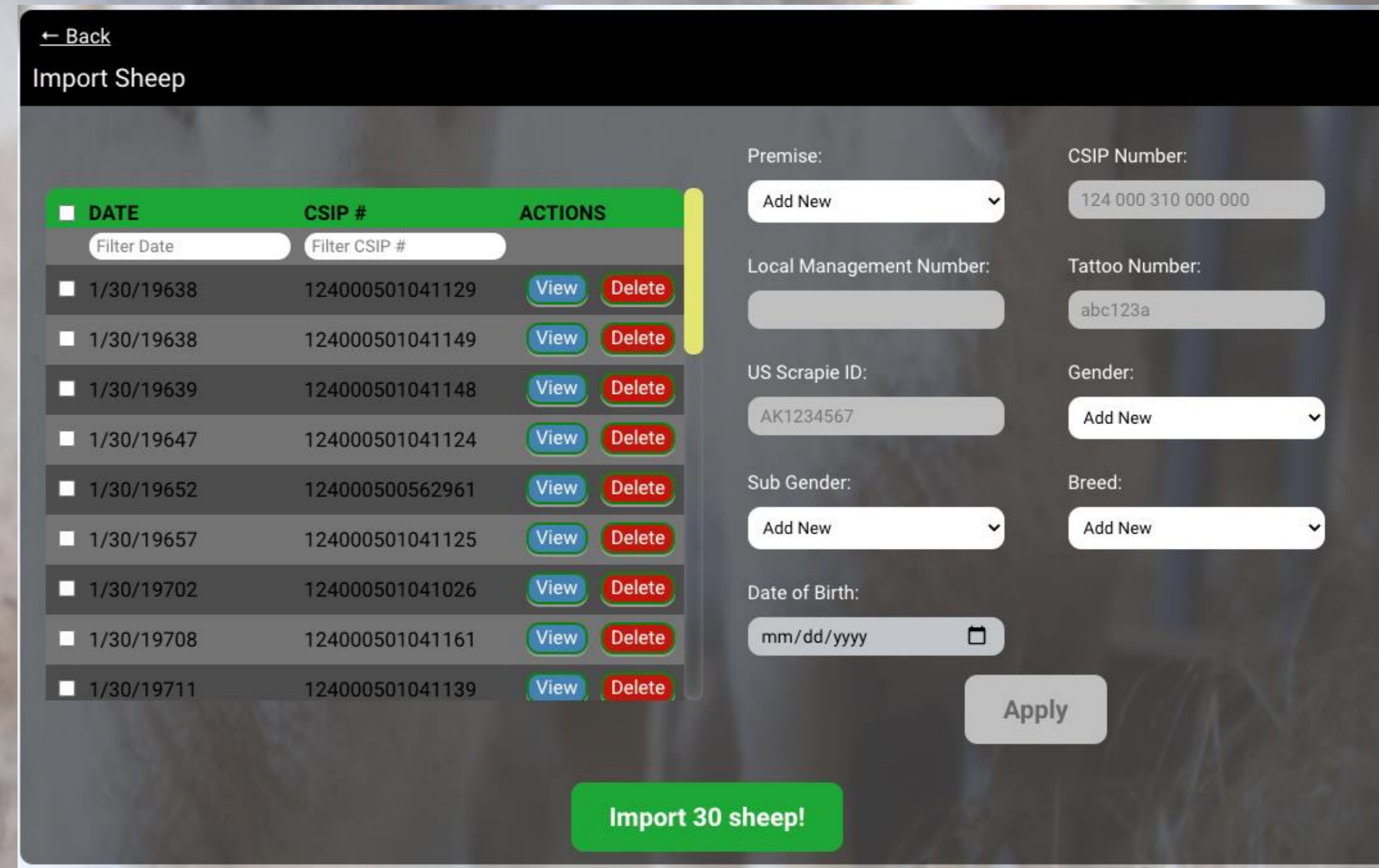
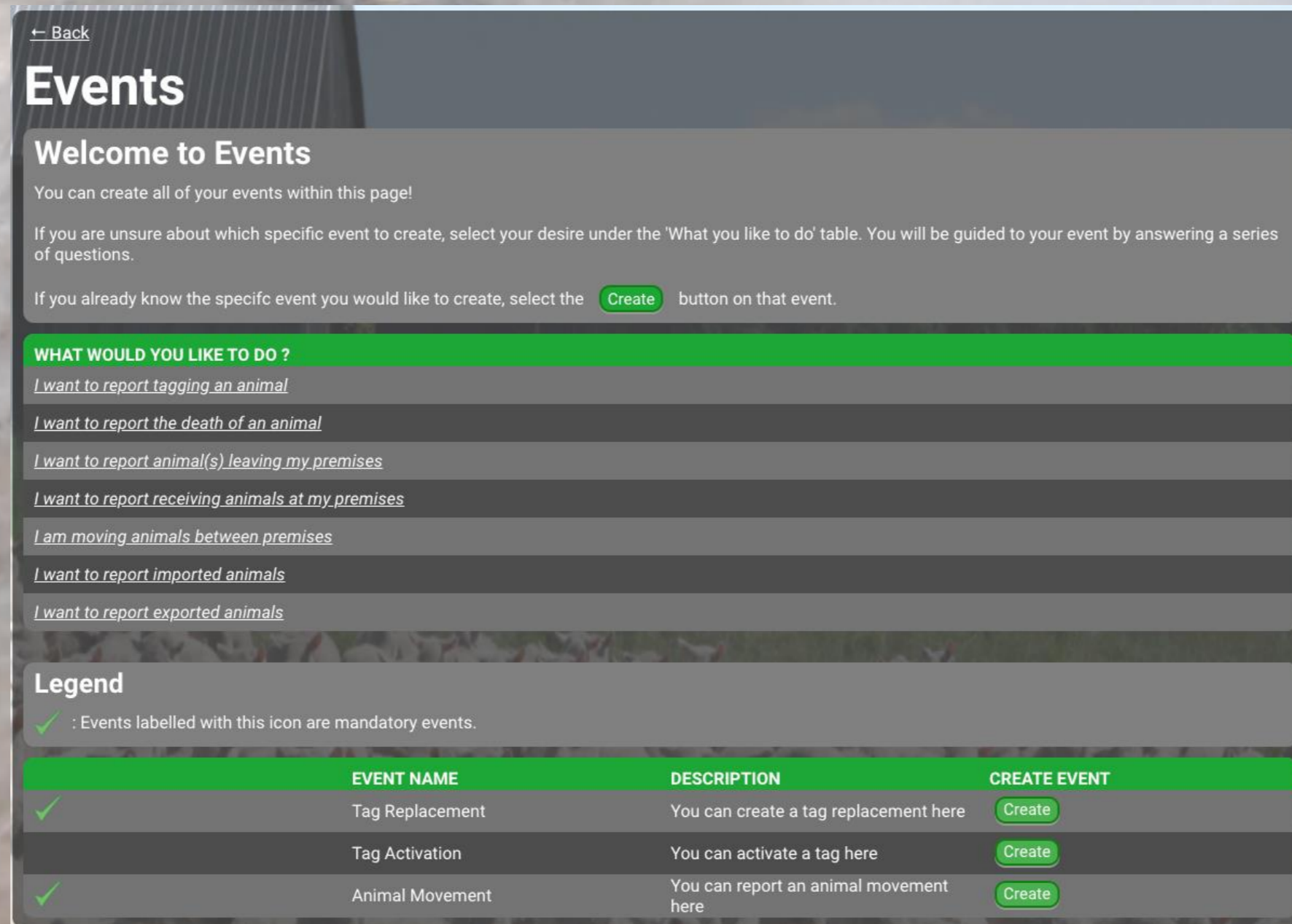
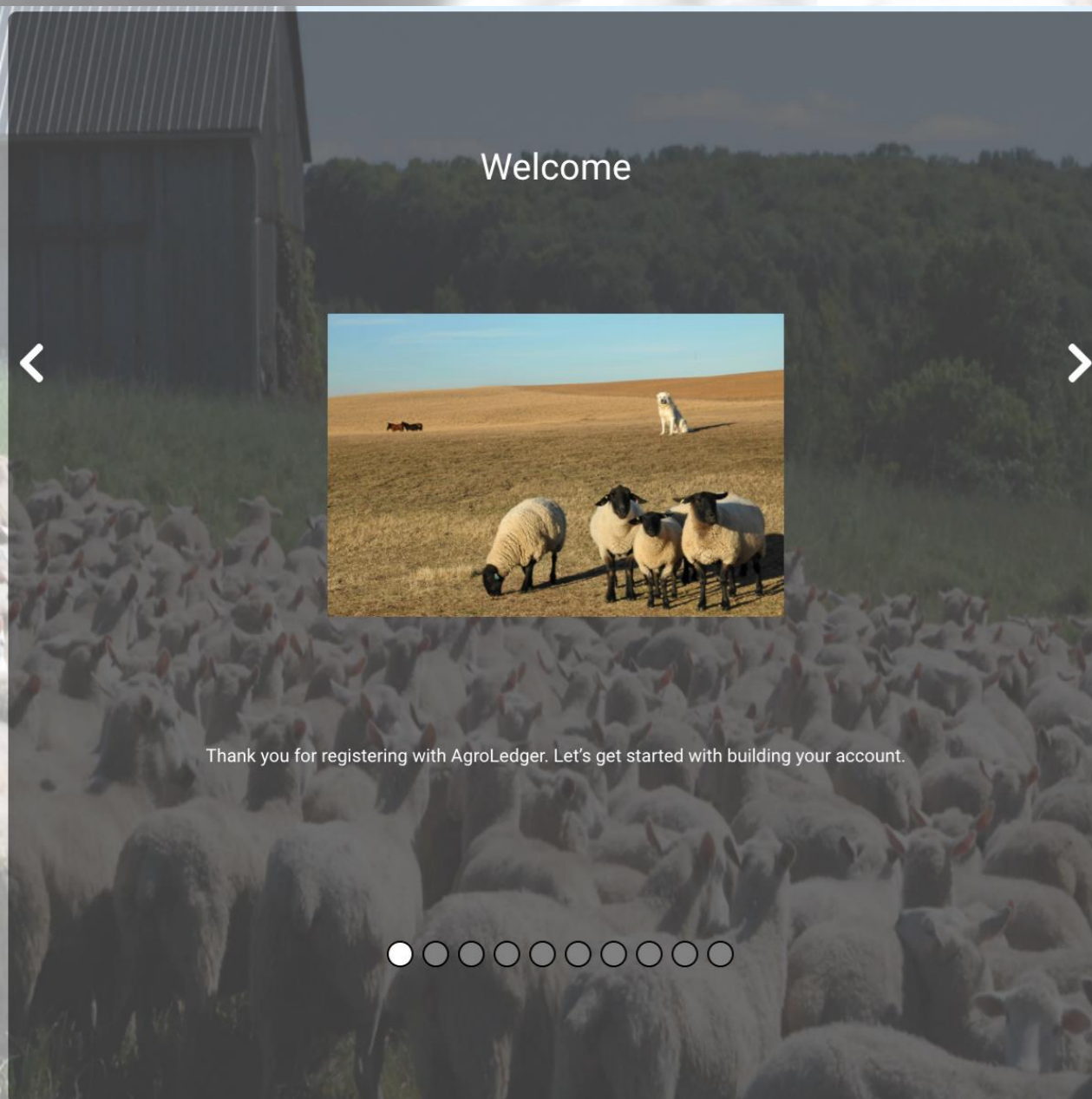


● Consumer ○ The Animal/Product ● Data Systems



WHAT WE'RE DOING DIFFERENTLY

Despite being a disruptive technology on the back-end, it has an intuitive look and feel on the front-end.

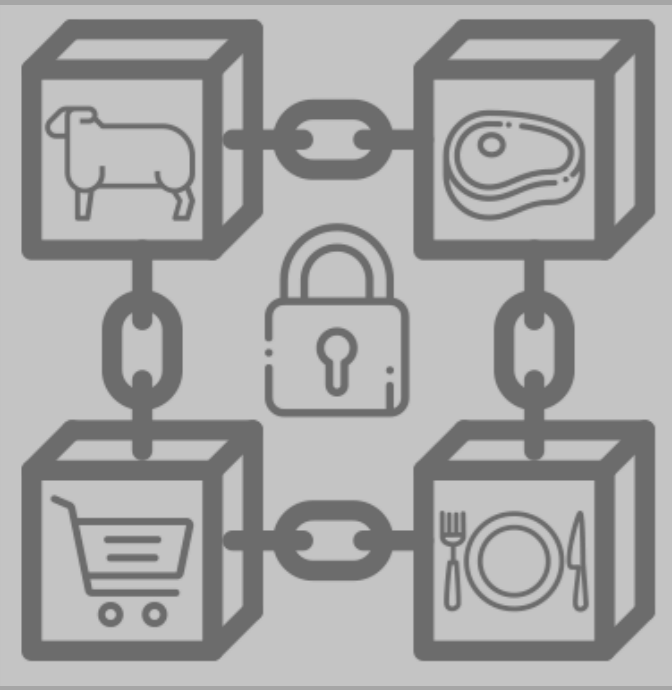




THIS IS JUST THE BEGINNING

The short list for the next phase of development includes:

- ✓ Smart contracts for assurance programs and certifications.
- ✓ Customer feedback capability.
- ✓ Machine learning for predictive analytics and supply chain management.
- ✓ AI (facial recognition) for animal identification and animal welfare.



THANK YOU

Corlena Patterson, MSc(Agr)
Executive Director

Canadian Sheep Federation
PO Box 10, Williamsburg ON K0C 2H0

Local: 1.613.652.1824
Toll Free: 1.888.684.7739
Fax: 1.613.652.1599

Email: info@cansheep.ca

www.cansheep.ca
www.freshcanadianlamb.ca
www.scrapiecanada.ca
fsfp.cansheep.ca