



Use of a Collaborative Disease Response Model

PED in Manitoba 2014-2018

National Farmed Animal Health & Welfare Council Forum
November 28, 2018
Ottawa, ON

Dr. Glen Duizer
Animal Health Surveillance Veterinarian
Manitoba Agriculture

Jenelle Hamblin
Manager, Swine Health Programs
Manitoba Pork

1

In The Beginning

Emerging disease (PED) comes to North America in 2013

- **Manitoba Issues**
 - High threat level because of US exposure and size of sector
 - Potential impact is large on a significant livestock sector
 - Limited disease knowledge and resources for each stakeholder (public & sector)
 - Limited means in place to address the issues
- **Manitoba Approach**
 - Highly engaged and proactive sector
 - Highly functional & representative provincial organization
 - Integrated & Collaborative stakeholders
 - Experienced & Knowledgeable veterinary professionals
 - Proactive public sector
 - Emergency response knowledge and resources (PID)
 - Diagnostic & Epidemiological expertise



2

The Manitoba Plan

- Collaborative approach from the onset
- Joint lead taken by MPC and MB Agriculture
- Input from active stakeholders
 - Systems, transporters, assembly yards, veterinarians, feed, etc.
- Identify the gaps
 - Knowledge of disease & risks, limited regulatory tools, validation of biosecurity, organized coordination & communication, full traceability, emergency response capacity
- What are the best options?



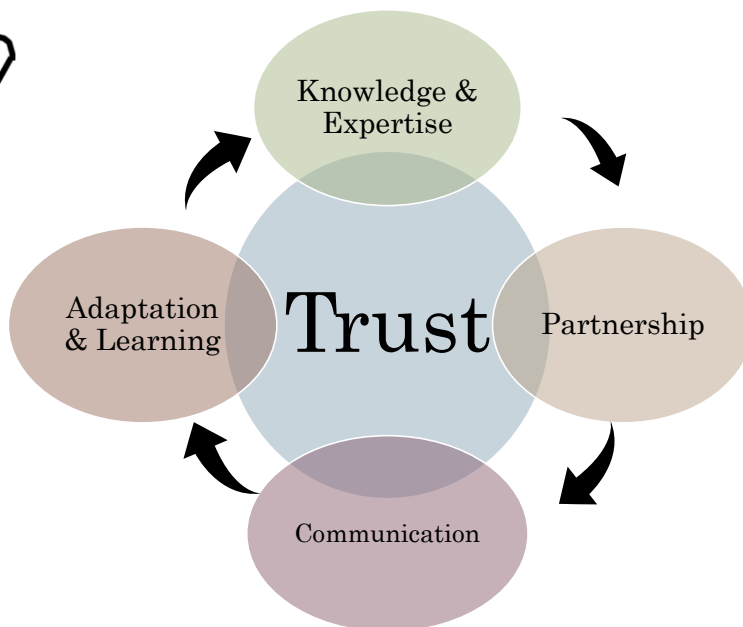
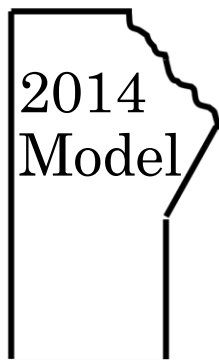
3

The Manitoba Plan (continued)

- What are the best options?
 - Reinforce & increase biosecurity sector wide
 - Establish effective, risk based surveillance
 - Cross train emergency response – joint staff in EOC
 - Increase communications throughout the sector
 - Increase regulatory options
 - Improve disease detection & diagnostic capacity
 - Sharing approaches and processes to build trust



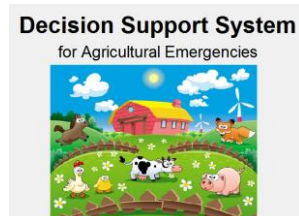
4



5

Knowledge & Expertise

- Dedicated & knowledgeable **swine veterinary community**
- Centralized **transport, slaughter & assembly hubs**
- Sector wide adoption of **On Farm biosecurity standards**
- Highly developed service sector with **dedicated primary service providers**
- Highly motivated & proactive **provincial pork organization**
- **Veterinary Diagnostic Laboratory** with experience in molecular diagnostics for swine diseases
- **Disease surveillance & epidemiology expertise** with experience in reportable & emerging disease response
- **Disease response system (DSSAE)** linking PID with mapping, zoning & routing
- **Provincial attitude** highly supportive of proactive, well planned, well communicated and integrated emergency response systems



6

Partnership



Canadian Swine Health
Intelligence Network
Réseau canadien de
surveillance de la santé porcine



Canadian Pork Council
Conseil canadien du porc



7

Partnership – Sector wide

- Manitoba Agriculture & Manitoba Pork
- Veterinary Group
- Manure Management Group
- Disease Management Group
- In field
 - Assembly Yards
 - Wash Stations
 - Transporters
 - Government Agencies/Crown Corporations – MB Hydro, Sustainable Development
 - Federal Abattoirs



8

Communication

- Speed vs Confidentiality – Not an easy task
- Open communication within the sector
- Organized communication was frequent
 - MB Swine Veterinary Group
 - Disease Management Group
 - Telephone Town Halls
- Manitoba Coordinated Disease Response
 - Participation in southeast MB? **78%**
 - Participation in all of MB? **48%**

ONGOING



MCDR



- Producers
- Community
- Food

MANITOBA
OFFICE OF

The Undersigned, _____
participate in the Manitoba Coordinated Disease Response (MCDR) initiative to build trust and share information between producers and veterinarians in disease-affected areas, with the short-term goal of minimizing the transmission of Porcine Epidemic Diarrhea virus (PEDv) in the recent outbreak area. To achieve this, Manitoba Pork has established this webpage and dedicated an MCDR Coordinator to provide a centralized contact point for all MCDR participants.

The Undersigned understand the importance of PEDv and/or PRRSv on the Undersigned's farm(s) with the Team. The Undersigned agree to submit diagnostic samples (VDL), or other samples, to the MCDR Coordinator for testing and location information about the Undersigned's herd, to facilitate the control of PEDv and/or PRRSv on the Undersigned's farm(s) with the Team. The Undersigned also agrees that the signature of the Undersigned on this document allows Manitoba Pork Council and the Office of the Chief Veterinarian of Manitoba to use the information provided for the purposes of the MCDR initiative.

The Undersigned agree to participate in the MCDR initiative.

- PEDv
- PRRSv *(strike out PRRSv if not participating in PRRSv testing under the Initiative)*

Staff Menu

Staff Resources

MCDR

MCDR

Back to member home

LOG OUT

The Manitoba Coordinated Disease Response (MCDR)

Manitoba Pork has developed the Manitoba Coordinated Disease Response (MCDR) initiative to build trust and share information between producers and veterinarians in disease-affected areas, with the short-term goal of minimizing the transmission of Porcine Epidemic Diarrhea virus (PEDv) in the recent outbreak area. To achieve this, Manitoba Pork has established this webpage and dedicated an MCDR Coordinator to provide a centralized contact point for all MCDR participants.

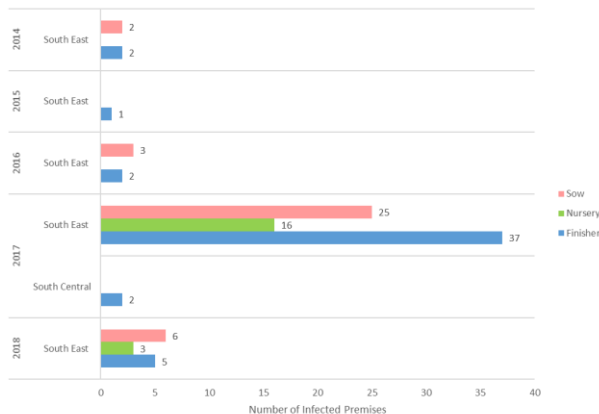
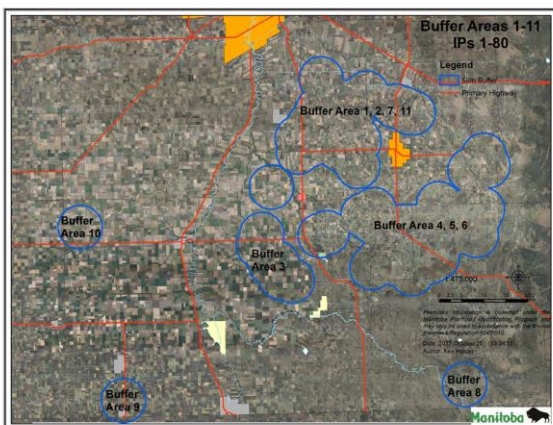
- The webpage will be updated regularly with:
- List of sites with PED statuses,
 - Disease status maps,
 - Manure spreading notifications,
 - Enhanced biosecurity protocols, and
 - Other updates related to ongoing disease management activities.

The long term goal of the MCDR is to have a mechanism that can be applied to any disease that threatens the Manitoba swine herd and the industry's prosperity.



Adaptation & Learning

- Buffer areas & biocontainment – Different approach to quarantines & zones
- Animal movement – THE BIGGEST RISK; frequency, exposure & area containment
- On Farm biosecurity – “Peacetime” vs “Wartime” biosecurity
- Transport – Increased C&D and Segregation
- High traffic sites – Managing risks that can’t be easily eliminated
- Manure storage & application – Managing risks that can’t be easily quantified
- Feed & feed delivery – Managing risks that were different than expected
- Deadstock – Limiting contact & contamination within an industry segment

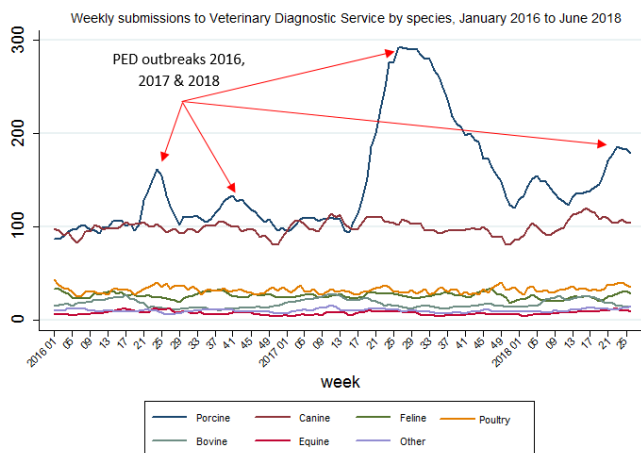


Gaps

- Surge capacity – can never have enough
- Discovery & negotiation time – The “who” & “how” of dealing with the unidentified issues & risks
 - PED Positive manure application
 - Inclusion of Provincial abattoirs in response
- With flexible approaches, not all are created equal
 - On site biocontainment
- Inability to use some regulatory tools – impact of quarantine & zoning on international exports
- Addressing the big risks – expensive, time consuming & require broad support
 - Assembly yard locations,
 - PED positive manure



13



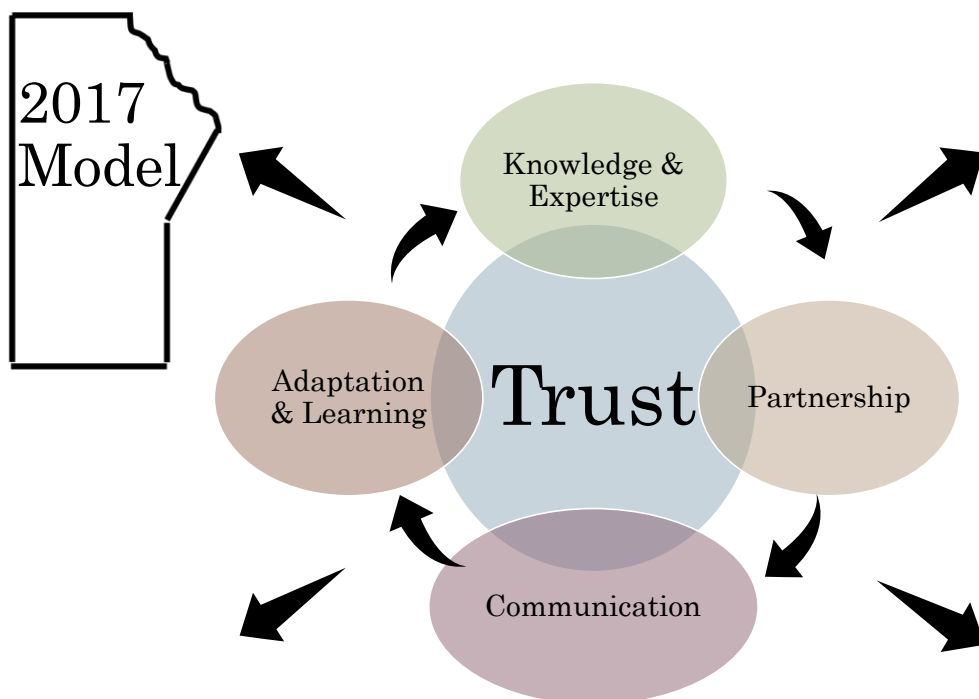
14

Summary of Success

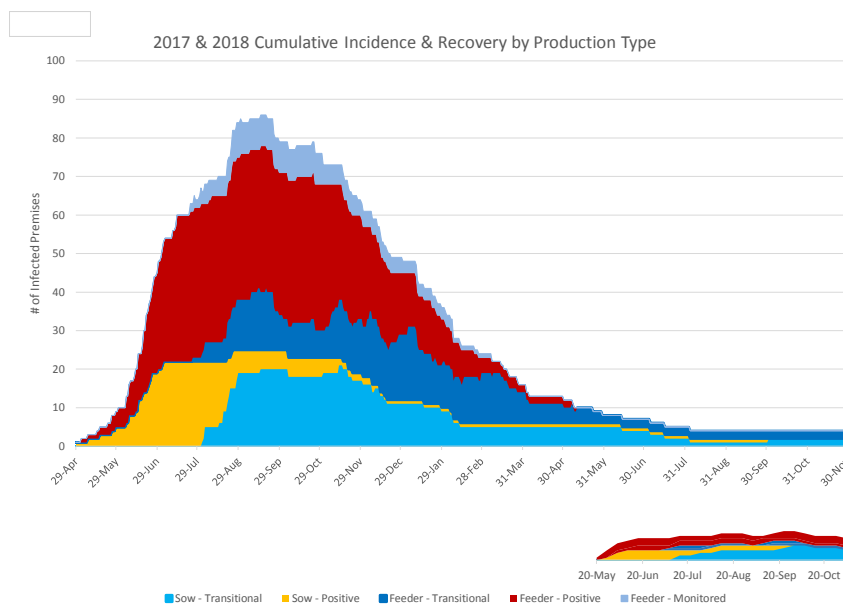
- Cycle continues to expand as we learn more
 - Partnerships grow and new partnerships are formed
 - Learned and adapted to each partner's strengths
 - Found multiple ways to address the many issues and problems
 - Enhanced and expanded communication channels
- Cycle builds greater capacity in key areas
- By choice
- An effective collaborative response model is based on trust



15



16



Questions?

Dr. Glen Duizer
 Animal Health Surveillance Veterinarian
 Office of the Chief Veterinarian
 Manitoba Agriculture
glen.duizer@gov.mb.ca

Jenelle Hamblin
 Manager, Swine Health Programs
 Manitoba Pork
jhamblin@manitobapork.com

For more information on PED in Manitoba

- <https://www.manitobapork.com/animal-care/swine-health/ped>
- <https://www.gov.mb.ca/agriculture/animal-health-and-welfare/animal-health/print.porcine-epidemic-diarrhea.html>

